



BEACON STREET CAPITAL, LLC INSTITUTIONAL LARGE CAP GROWTH

Address: 3350 Riverwood Parkway, Suite 1900
Atlanta, GA, 30339

Firm Type: Independent Reg. Inv. Advisor

Legal Structure: Limited Liability

Year Founded: 2001

Firm GIPS Compliant: No

Firm/Product Assets: \$ 21.00 Million / \$ 2.07 Million

Firm/Product Accounts: 21 / 1

Parent Company: None

Investment Style: Growth

Market Capitalization: Large Capitalization (>7 \$Billion)

Decision Making: Fundamental Analysis

Portfolio Manager: Mr. Terry Burke

Manager Tenure: 1/2002

Mgr. Experience: 1992

Product Contact: Mr. Herron Weems

Phone: 404-874-2090

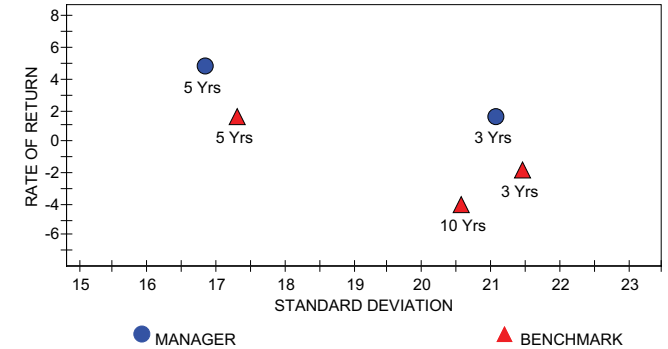
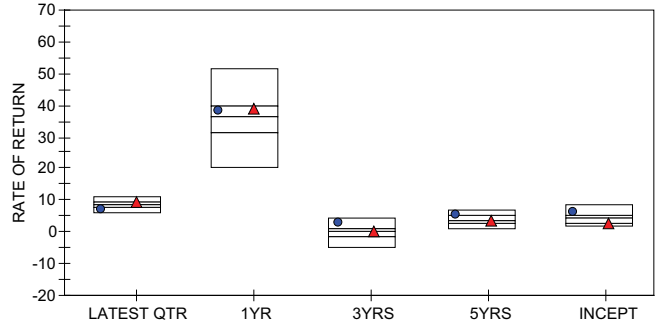
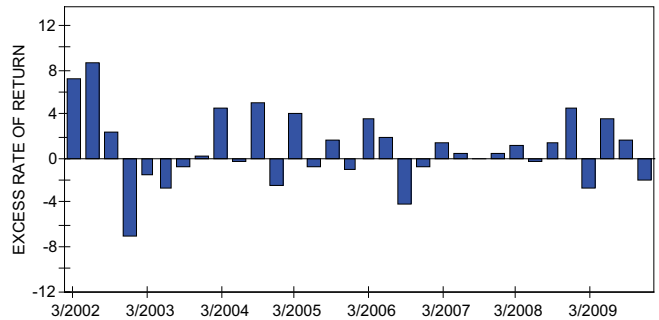
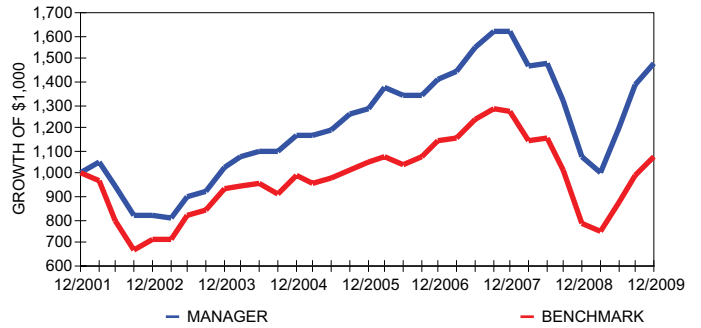
		Account Size	Annual Fees
Performance Incentive Fee:	Yes	\$1 Million	\$10,000
Individual Min Annual Fee:	\$30,000	\$5 Million	\$50,000
Individual Min Account Size:	\$3,000,000	\$10 Million	\$85,000
Offered As Mutual Funds:	No	\$25 Million	\$212,500
Offered As Commingled Funds:	No	\$50 Million	\$425,000
Commingled Min Annual Fee:	--	\$100 Million	\$850,000
Commingled Min Account Size:	--	\$200 Million	\$1,700,000

	MRQ	2009	2008	2007	2006	2005	2004	2003	2002	2001	2000	Incept
Manager	6.03	37.03	-33.28	14.47	9.79	9.84	14.08	24.45	-17.62	--	--	4.99
Bnchmrk	7.94	37.21	-38.44	11.81	9.07	5.27	6.30	29.76	-27.89	-20.42	-22.43	0.95
Excess	-1.91	-0.18	5.15	2.67	0.72	4.57	7.78	-5.31	10.27	--	--	4.04
90 TBill	0.01	0.15	1.27	4.42	4.88	3.30	1.44	1.01	1.59	3.26	5.90	2.25

PERIOD	ROR	STDEV	ALPHA	BETA	RSQR	TRCKERR	SHARPE	INFORATIO
3 Yrs	1.53	21.09	3.22	0.97	0.97	3.90	-0.02	0.88
4 Yrs	3.53	18.67	2.61	0.95	0.94	4.52	0.05	0.62
5 Yrs	4.77	16.82	2.97	0.94	0.93	4.44	0.12	0.71
6 Yrs	6.26	15.58	3.73	0.91	0.91	4.89	0.24	0.79
7 Yrs	8.69	15.33	2.94	0.90	0.91	4.81	0.41	0.58
8 Yrs	4.99	15.84	3.65	0.83	0.87	6.44	0.17	0.63
9 Yrs	--	--	--	--	--	--	--	--
10 Yrs	--	--	--	--	--	--	--	--
Inception	4.99	15.84	3.65	0.83	0.87	6.44	0.17	0.63

GICS Sector Breakdown: 12/2009		%	Equity Characteristics: 12/2009		%
Materials	5.90		Beta(5 Year)	1.01	
Energy	19.30		Dividend Yield	2.06	
Consumer Staples	9.90		5 Year EPS Growth	21.80	
Consumer Discretionary	2.60		Price/Book	7.15	
Industrials	19.80		P/E (Proj next 12 mths)	14.00	
Utilities	--		Return on Equity	18.00	
Health Care	13.60		Market Capitalization:		
Information Technology	14.50		Wght Avg (\$MM)	68750.00	
Telecommunications Services	5.40		Median (\$MM)	35800.00	
Financials	4.50		Debt/Equity	69.00	
Cash	4.50		Ann Fiscal YTD Turnover	42.04	
Other	--		SEC-30-Day Yield	--	

Ten Largest Holdings:9/2009		%	Firm Representative Client List	
GENERAL DYNAMICS	4.60		Confidential	
DIAMOND OFFSHORE DRILLING	3.80		--	
FREEMPORT MCMORAN	3.80		--	
PROCTOR & GAMBLE	3.50		--	
AGILENT	3.30		--	
BP PLC	3.10		--	
PRIDE INT'L	3.10		--	
FLOWSERVE	3.10		--	
INTEL	2.90		--	
ALTRIA	2.90		--	



PERIOD	RATE OF RETURN			GROWTH OF \$1,000		
	MANAGER	BENCHMARK	EXCESS	MANAGER	BENCHMARK	PREMIUM
1 Yr	37.03	37.21	-0.18	\$1,370	\$1,372	-\$2
2 Yrs	-4.39	-8.09	3.71	\$914	\$845	\$70
3 Yrs	1.53	-1.89	3.41	\$1,047	\$944	\$102
4 Yrs	3.53	0.74	2.79	\$1,149	\$1,030	\$119
5 Yrs	4.77	1.63	3.13	\$1,262	\$1,084	\$178
6 Yrs	6.26	2.40	3.87	\$1,440	\$1,153	\$287
7 Yrs	8.69	5.92	2.77	\$1,792	\$1,496	\$296
8 Yrs	4.99	0.95	4.04	\$1,476	\$1,079	\$397
9 Yrs	--	-1.68	--	--	\$858	--
10 Yrs	--	-3.98	--	--	\$666	--
Inception	4.99	0.95	4.04	\$1,476	\$1,079	\$397



BEACON STREET CAPITAL, LLC INSTITUTIONAL LARGE CAP GROWTH

Equity Personnel	Total	Firm Personnel	Total
Portfolio Managers	2	Portfolio Managers	2
Research Analysts	2	Research Analysts	--
Traders	1	Traders	--
Marketing	1	Marketing	--
Total Equity	2	Client Service	--

EQUITY INVESTMENT PHILOSOPHY - Beacon Street Capital is a long-only, large-cap growth manager, but unlike most managers it uses no Wall Street research, economic data or technical trend analysis. It believes these traditional sources of information are less reliable in determining potential stock price appreciation than the allocation of corporate capital based on management's view of the company's future. With this in mind it created, in 1992, an accounting-based algorithm that includes key balance sheet items found to have predictive qualities related to a company's internal growth potential. These predictive qualities are not immediately recognized by the market, which gives Beacon Street a competitive edge in buying and selling stocks prior to the market's ability to react. Combining this mechanical trading system with bottom-up fundamental screening process creates significant alpha, with high benchmark correlation, on a consistent and repeatable basis.

INVESTMENT DECISION-MAKING PROCESS - To minimize systemic risk Beacon Street focuses on high quality stocks selected by screening the S&P500 Index and the Russell 1000 Index for companies with superior financial strength, profitability and safety. The minimum requirements are a return on invested capital of 12%, a "cash flow" return on invested capital of 5% and a net profit margin of 4%. This produces a manageable list of 200-250 high quality names and from there begins the stock selection process. The most recent three years of quarterly data is used to look for companies with a strong history of earnings growth and a positive change in their internal growth potential as measured by this unique accounting based algorithm, the Quantitative Earnings Power (Q.E.P. Index). To make better decisions and maintain consistency in performance it is important to minimize market emotion, therefore the buy/sell decision centers around using this quantitative marker, backed up by almost two decades of experience and judgment, as the rationale for buying or selling a stock. Only stocks with a positive trend in their Q.E.P. Index are purchased if the valuation for earnings growth is reasonable. Growth potential is recalculated quarterly and if it remains positive the stock is kept in the portfolio regardless of market conditions. If it turns negative the stock is sold regardless of its earnings strength. This enables the growth premium associated with the stock to be captured and retained before the market can price it in or out. This growth premium enhances the portfolios performance in an uptrend and often supports its value in a down trend. Since price is not a consideration, traditional profit taking is not practiced. In fact, using targeted price levels as an exit strategy most often results in selling a stock too early or holding a stock too long. Instead, Beacon Street is able to cut its losses early and let its profits run by staying

with a stock only as long as its growth potential remains positive. This creates big winners that contribute significantly to the performance of the portfolio over the long-term and few and smaller losers whose negative impact is not as significant to the overall portfolio. Although growth potential is calculated each quarter, stocks are monitored on a daily basis and between reporting dates and if a holding is acquired, makes a large acquisition, or becomes subject to a federal fraud investigation, the resulting uncertainty of the impact on growth potential might prompt Beacon Street to liquidate that position. Furthermore, the measurement used to identify internal growth and capture the associated growth premium also identifies the quality, and by extension the stability, of that growth premium. With greater stability growth potential is more reliable and a stock's price is less influenced by external market forces, therefore gains are maintained as price volatility relative to the market is reduced. Conversely, lower stability leads to greater influence by market forces which increase price volatility. Using this as a guide Beacon Street is able to focus on stocks that fall within the comfort zone of risk.

ORGANIZATION AND OWNERSHIP - Beacon Street Capital, LLC, is a registered investment advisor located in Atlanta, Georgia. The firm was co-founded in late 2001 by Terry Burke and Herron Weems, who have their own capital invested in the company and alongside clients in the investment products. There is no affiliation with any financial institutions. The two managing members own 93% of the firm and work closely together on a daily basis. All portfolio and administrative decisions are made jointly. Mr. Burke serves as CEO and provides the quantitative analysis for each stock. Mr. Weems serves as Managing Director and provides external research on individual stocks as well as compliance and client communication. The formula for measuring internal growth potential has not changed since it was first created in 1992, and the process used to select stocks to purchase and determine when to sell has been consistent since inception of the firm. As investment managers that align their interest with that of its clients Beacon Street Capital is committed to taking fewer risks and producing better performance results. Mr. Burke created the accounting based algorithm used to capitalize on misvalued stocks from his experience at DataBase Research Corporation, a company he founded to provide financial consulting to public and privately held companies. Mr. Burke received a B.A. degree in 1970 from the University of Florida with a double major in Finance and Business Administration, and did post baccalaureate work there in accounting. Mr. Weems has over 23 years experience in the securities industries with Salomon Brothers, which he joined in 1977 and with Salomon Smith Barney after the merger of Salomon Brothers and Smith Barney. In 1980 he joined the fledgling mortgage department of Salomon Brothers under Lewis Ranieri and helped to build the department into a leadership position on Wall Street. Mr. Weems received a B.A. in 1975 from Vanderbilt University with a double major in Economics and Business Administration, and earned

* PSN is an investment manager database and is a division of Informa Investment Solutions, Inc. Reproduction of any information obtained from PSN in any form is prohibited except with the written permission of Informa Investment Solutions, Inc. Past performance does not guarantee future results. All rates of return are annualized. Performance figures shown are gross of fees and do not take into account advisory fees or transaction costs. These fees costs will reduce actual returns. The information provided is not intended to be a complete analysis of every material fact concerning separate account products. The performance figures have been reported solely for informational purposes and have been provided by the separate account managers. No representation is given with respect to their accuracy or completeness, nor that the figures are necessarily GIPS compliant, and they will be subject to change. This information should not be deemed an offer to sell or a solicitation of an offer to buy shares of any products that are described herein. Index performance returns do not reflect any management fees, transaction costs or expenses. One cannot invest directly in an index. Because of the possibility of human or mechanical error by IIS sources or others, IIS does not guarantee the accuracy, adequacy, completeness or availability of any information and is not responsible for any errors or omissions or for the results obtained from the use of such information. THERE ARE NO EXPRESS OR IMPLIED WARRANTIES, INCLUDING, BUT NOT LIMITED TO, WARRANTIES OF MERCHANTABILITY OR FITNESS FOR A PARTICULAR PURPOSE OR USE. In no event shall IIS be liable for any indirect, special or consequential damages in connection with use of any subset of PSN data or derived data.



**BEACON STREET CAPITAL, LLC
INSTITUTIONAL LARGE CAP GROWTH**

an MBA in 1977 from the University of Chicago Graduate School of Business with concentrations in Finance and Accounting. He is a member of the Leadership Atlanta Class of 1998 and currently serves as Vice-Chairman of the Board of Trustees of Literacy Action, Inc.

Offered WRAP/TAMP Program:

* PSN is an investment manager database and is a division of Informa Investment Solutions, Inc. Reproduction of any information obtained from PSN in any form is prohibited except with the written permission of Informa Investment Solutions, Inc. Past performance does not guarantee future results. All rates of return are annualized. Performance figures shown are gross of fees and do not take into account advisory fees or transaction costs. These fees costs will reduce actual returns. The information provided is not intended to be a complete analysis of every material fact concerning separate account products. The performance figures have been reported solely for informational purposes and have been provided by the separate account managers. No representation is given with respect to their accuracy or completeness, nor that the figures are necessarily GIPS compliant, and they will be subject to change. This information should not be deemed an offer to sell or a solicitation of an offer to buy shares of any products that are described herein. Index performance returns do not reflect any management fees, transaction costs or expenses. One cannot invest directly in an index. Because of the possibility of human or mechanical error by IIS sources or others, IIS does not guarantee the accuracy, adequacy, completeness or availability of any information and is not responsible for any errors or omissions or for the results obtained from the use of such information. THERE ARE NO EXPRESS OR IMPLIED WARRANTIES, INCLUDING, BUT NOT LIMITED TO, WARRANTIES OF MERCHANTABILITY OR FITNESS FOR A PARTICULAR PURPOSE OR USE. In no event shall IIS be liable for any indirect, special or consequential damages in connection with use of any subset of PSN data or derived data.



**BEACON STREET CAPITAL, LLC
INSTITUTIONAL LARGE CAP GROWTH
PERFORMANCE STATISTICS SUMMARY
PERIODS ENDING DECEMBER 31, 2009**

	ENDED	RETURN
Best Qtr	6/2009	19.93
Worst Qtr	12/2008	-18.31
Best Fourth Qtr	12/2003	10.74
Worst Fourth Qtr	12/2008	-18.31
Best Year	12/2009	37.03
Worst Year	12/2008	-33.28

Total # of Valid Quarters: 32
of Positive Quarters: 20
of Negative Quarters: 12

	ENDED	QTRS
Longest Consecutive Positive Qtrs	6/2004	5
Longest Consecutive Negative Qtrs	3/2009	3

	MRQ	YTD	2009	2008	2007	2006	2005	2004	2003	Inception
Product	6.03	37.03	37.03	-33.28	14.47	9.79	9.84	14.08	24.45	4.99
Risk Index	7.94	37.21	37.21	-38.44	11.81	9.07	5.27	6.30	29.76	0.95
External ExcROR	-1.91	-0.18	-0.18	5.15	2.67	0.72	4.57	7.78	-5.31	4.04
Riskless Index	0.01	0.15	0.15	1.27	4.42	4.88	3.30	1.44	1.01	2.25

STATISTICS SUMMARY										
PERIOD	ROR	STDDEV	SHARPE	ALPHA	BETA	RSQR	REL.RISK	TRACK ERROR	TREYNOR RATIO	INFO RATIO
3 Yrs	1.53	21.09	-0.02	3.22	0.97	0.97	0.98	3.90	-0.42	0.88
4 Yrs	3.53	18.67	0.05	2.61	0.95	0.94	0.98	4.52	0.91	0.62
5 Yrs	4.77	16.82	0.12	2.97	0.94	0.93	0.97	4.44	2.10	0.71
6 Yrs	6.26	15.58	0.24	3.73	0.91	0.91	0.95	4.89	4.06	0.79
7 Yrs	8.69	15.33	0.41	2.94	0.90	0.91	0.94	4.81	7.06	0.58
Inception	4.99	15.84	0.17	3.65	0.83	0.87	0.88	6.44	3.32	0.63

*Inception Date : 12/2001
*Ending Date : 12/2009
RiskLess Index : 90 Day U.S. Treasury Bill
Risk Index : Russell 1000 Growth



BEACON STREET CAPITAL, LLC INSTITUTIONAL LARGE CAP GROWTH

CONTACT: Mr. Herron Weems
PHONE: 404-874-2090

PORTFOLIO MANAGER: Mr. Terry Burke
TENURE: 1/2002

MANAGER TOTAL PERFORMANCE																				
	2009	2008	2007	2006	2005	2004	2003	2002	2001	2000	1999	1998	1997	1996	1995	1994	1993	1992	1991	1990
Qtr 1	-6.91	-9.05	2.65	6.76	-0.01	5.36	-2.52	4.58	---	---	---	---	---	---	---	---	---	---	---	---
Qtr 2	19.93	0.88	7.30	-1.99	1.80	1.67	11.69	-9.94	---	---	---	---	---	---	---	---	---	---	---	---
Qtr 3	15.75	-10.98	4.15	-0.20	5.72	-0.11	3.21	-12.57	---	---	---	---	---	---	---	---	---	---	---	---
Qtr 4	6.03	-18.31	-0.21	5.15	2.07	6.61	10.74	0.05	---	---	---	---	---	---	---	---	---	---	---	---
Full Year	37.03	-33.28	14.47	9.79	9.84	14.08	24.45	-17.62	---	---	---	---	---	---	---	---	---	---	---	---

BENCHMARK TOTAL PERFORMANCE																				
	2009	2008	2007	2006	2005	2004	2003	2002	2001	2000	1999	1998	1997	1996	1995	1994	1993	1992	1991	1990
Qtr 1	-4.12	-10.18	1.19	3.09	-4.08	0.78	-1.07	-2.59	-20.90	7.13	6.36	15.15	0.54	5.37	9.52	-4.41	-0.84	-4.94	17.94	-3.70
Qtr 2	16.32	1.25	6.86	-3.90	2.47	1.94	14.30	-18.67	8.42	-2.70	3.85	4.54	18.91	6.36	9.83	-1.02	-1.55	-1.09	-0.96	10.13
Qtr 3	13.97	-12.33	4.20	3.94	4.01	-5.22	3.92	-15.05	-19.41	-5.38	-3.66	-9.08	7.52	3.60	9.08	7.69	1.48	4.40	6.99	-15.24
Qtr 4	7.94	-22.79	-0.77	5.93	2.98	9.17	10.42	7.14	15.15	-21.34	25.14	26.74	1.52	6.04	4.55	0.75	3.87	6.97	12.96	10.95
Full Year	37.21	-38.44	11.81	9.07	5.27	6.30	29.76	-27.89	-20.42	-22.43	33.16	38.71	30.49	23.12	37.19	2.66	2.90	5.00	41.16	-0.26

EXCESS PERFORMANCE																				
	2009	2008	2007	2006	2005	2004	2003	2002	2001	2000	1999	1998	1997	1996	1995	1994	1993	1992	1991	1990
Qtr 1	-2.79	1.13	1.47	3.66	4.07	4.58	-1.44	7.17	---	---	---	---	---	---	---	---	---	---	---	---
Qtr 2	3.60	-0.37	0.44	1.91	-0.66	-0.26	-2.62	8.73	---	---	---	---	---	---	---	---	---	---	---	---
Qtr 3	1.78	1.34	-0.05	-4.14	1.70	5.11	-0.70	2.47	---	---	---	---	---	---	---	---	---	---	---	---
Qtr 4	-1.91	4.48	0.56	-0.77	-0.91	-2.56	0.32	-7.10	---	---	---	---	---	---	---	---	---	---	---	---
Full Year	-0.18	5.15	2.67	0.72	4.57	7.78	-5.31	10.27	---	---	---	---	---	---	---	---	---	---	---	---

ANNUALIZED TOTAL PERFORMANCE TRIANGLE																				
	2009	2008	2007	2006	2005	2004	2003	2002	2001	2000	1999	1998	1997	1996	1995	1994	1993	1992	1991	1990
Mgr (1 YR)	37.03	-33.28	14.47	9.79	9.84	14.08	24.45	-17.62	---	---	---	---	---	---	---	---	---	---	---	---
Benchmark	37.21	-38.44	11.81	9.07	5.27	6.30	29.76	-27.89	-20.42	-22.43	33.16	38.71	30.49	23.12	37.19	2.66	2.90	5.00	41.16	-0.26
Mgr (2 YR)	-4.39	-12.61	12.11	9.82	11.94	19.15	1.25	---	---	---	---	---	---	---	---	---	---	---	---	---
Benchmark	-8.09	-17.03	10.43	7.16	5.79	17.45	-3.27	-24.25	-21.43	1.63	35.90	34.53	26.75	29.96	18.67	2.78	3.95	21.75	18.66	---
Mgr (3 YR)	1.53	-5.70	11.35	11.22	15.96	5.36	---	---	---	---	---	---	---	---	---	---	---	---	---	---
Benchmark	-1.89	-9.11	8.68	6.87	13.24	-0.18	-9.36	-23.64	-6.32	12.74	34.07	30.62	30.14	20.14	13.16	3.51	15.11	13.92	---	---
Mgr (4 YR)	3.53	-2.03	12.03	14.39	6.46	---	---	---	---	---	---	---	---	---	---	---	---	---	---	---
Benchmark	0.74	-5.71	8.08	12.18	1.16	-5.68	-12.82	-12.25	3.33	16.93	31.25	32.23	22.64	15.58	11.07	11.86	11.06	---	---	---
Mgr (5 YR)	4.77	1.00	14.41	7.12	---	---	---	---	---	---	---	---	---	---	---	---	---	---	---	---
Benchmark	1.63	-3.42	12.11	2.69	-3.58	-9.29	-5.11	-3.84	8.27	18.15	32.41	25.70	18.41	13.38	16.52	9.33	---	---	---	---
Mgr (6 YR)	6.26	4.57	8.31	---	---	---	---	---	---	---	---	---	---	---	---	---	---	---	---	---
Benchmark	2.40	1.45	4.16	-1.58	-7.01	-3.30	1.08	1.18	10.62	21.12	26.91	21.58	16.07	17.60	13.54	---	---	---	---	---
Mgr (7 YR)	8.69	1.07	---	---	---	---	---	---	---	---	---	---	---	---	---	---	---	---	---	---
Benchmark	5.92	-3.38	0.23	-4.87	-2.12	1.81	4.84	4.06	14.07	18.30	23.17	19.06	19.36	14.86	---	---	---	---	---	---
Mgr (8 YR)	4.99	---	---	---	---	---	---	---	---	---	---	---	---	---	---	---	---	---	---	---
Benchmark	0.95	-5.69	-2.93	-0.79	2.24	5.02	6.97	7.71	12.58	16.25	20.74	21.62	16.71	---	---	---	---	---	---	---
Mgr (9 YR)	---	---	---	---	---	---	---	---	---	---	---	---	---	---	---	---	---	---	---	---
Benchmark	-1.68	-7.72	0.54	2.98	5.05	6.89	9.97	7.14	11.46	14.94	22.85	18.97	---	---	---	---	---	---	---	---
Mgr (10 YR)	---	---	---	---	---	---	---	---	---	---	---	---	---	---	---	---	---	---	---	---
Benchmark	-3.98	-4.27	3.83	5.44	6.73	9.59	9.21	6.71	10.80	17.33	20.32	---	---	---	---	---	---	---	---	---
Mgr (11 YR)	---	---	---	---	---	---	---	---	---	---	---	---	---	---	---	---	---	---	---	---
Benchmark	-1.09	-0.99	6.01	6.94	9.19	8.94	8.62	6.55	13.26	15.61	---	---	---	---	---	---	---	---	---	---
Mgr (12 YR)	---	---	---	---	---	---	---	---	---	---	---	---	---	---	---	---	---	---	---	---
Benchmark	1.74	1.31	7.34	9.18	8.63	8.43	8.32	9.08	12.07	---	---	---	---	---	---	---	---	---	---	---
Mgr (13 YR)	---	---	---	---	---	---	---	---	---	---	---	---	---	---	---	---	---	---	---	---
Benchmark	3.71	2.85	9.38	8.67	8.18	8.16	10.55	8.33	---	---	---	---	---	---	---	---	---	---	---	---
Mgr (14 YR)	---	---	---	---	---	---	---	---	---	---	---	---	---	---	---	---	---	---	---	---
Benchmark	4.98	4.98	8.89	8.25	7.95	10.24	9.74	---	---	---	---	---	---	---	---	---	---	---	---	---
Mgr (15 YR)	---	---	---	---	---	---	---	---	---	---	---	---	---	---	---	---	---	---	---	---
Benchmark	6.87	4.83	8.48	8.03	9.90	9.50	---	---	---	---	---	---	---	---	---	---	---	---	---	---
Mgr (16 YR)	---	---	---	---	---	---	---	---	---	---	---	---	---	---	---	---	---	---	---	---
Benchmark	6.61	4.71	8.26	9.85	9.24	---	---	---	---	---	---	---	---	---	---	---	---	---	---	---
Mgr (17 YR)	---	---	---	---	---	---	---	---	---	---	---	---	---	---	---	---	---	---	---	---
Benchmark	6.38	4.72	9.96	9.23	---	---	---	---	---	---	---	---	---	---	---	---	---	---	---	---
Mgr (18 YR)	---	---	---	---	---	---	---	---	---	---	---	---	---	---	---	---	---	---	---	---
Benchmark	6.31	6.47	9.37	---	---	---	---	---	---	---	---	---	---	---	---	---	---	---	---	---
Mgr (19 YR)	---	---	---	---	---	---	---	---	---	---	---	---	---	---	---	---	---	---	---	---
Benchmark	7.91	6.11	---	---	---	---	---	---	---	---	---	---	---	---	---	---	---	---	---	---
Mgr (20 YR)	---	---	---	---	---	---	---	---	---	---	---	---	---	---	---	---	---	---	---	---
Benchmark	7.48	---	---	---	---	---	---	---	---	---	---	---	---	---	---	---	---	---	---	---

SINCE INCEPTION PERFORMANCE:
PERIODS ENDING: December 31, 2009

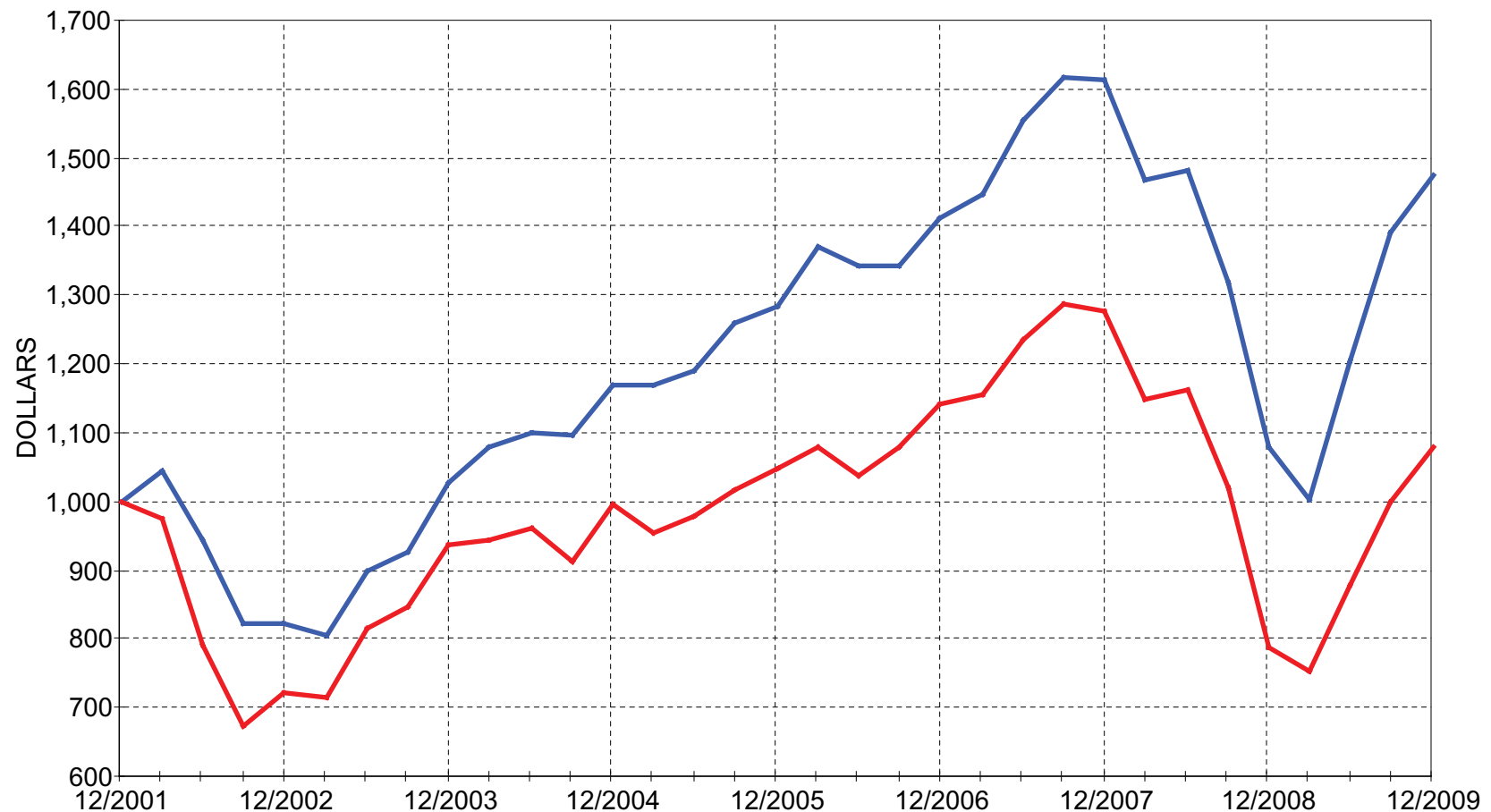
PRODUCT: 4.99
SINCE INCEPTION: December 31, 2001

BENCHMARK: 0.95
BENCHMARK: Russell 1000 Growth

EXCESS: 4.04



**BEACON STREET CAPITAL, LLC
INSTITUTIONAL LARGE CAP GROWTH
GROWTH OF \$1,000 INVESTMENT
PERIODS ENDING DECEMBER 31, 2009**



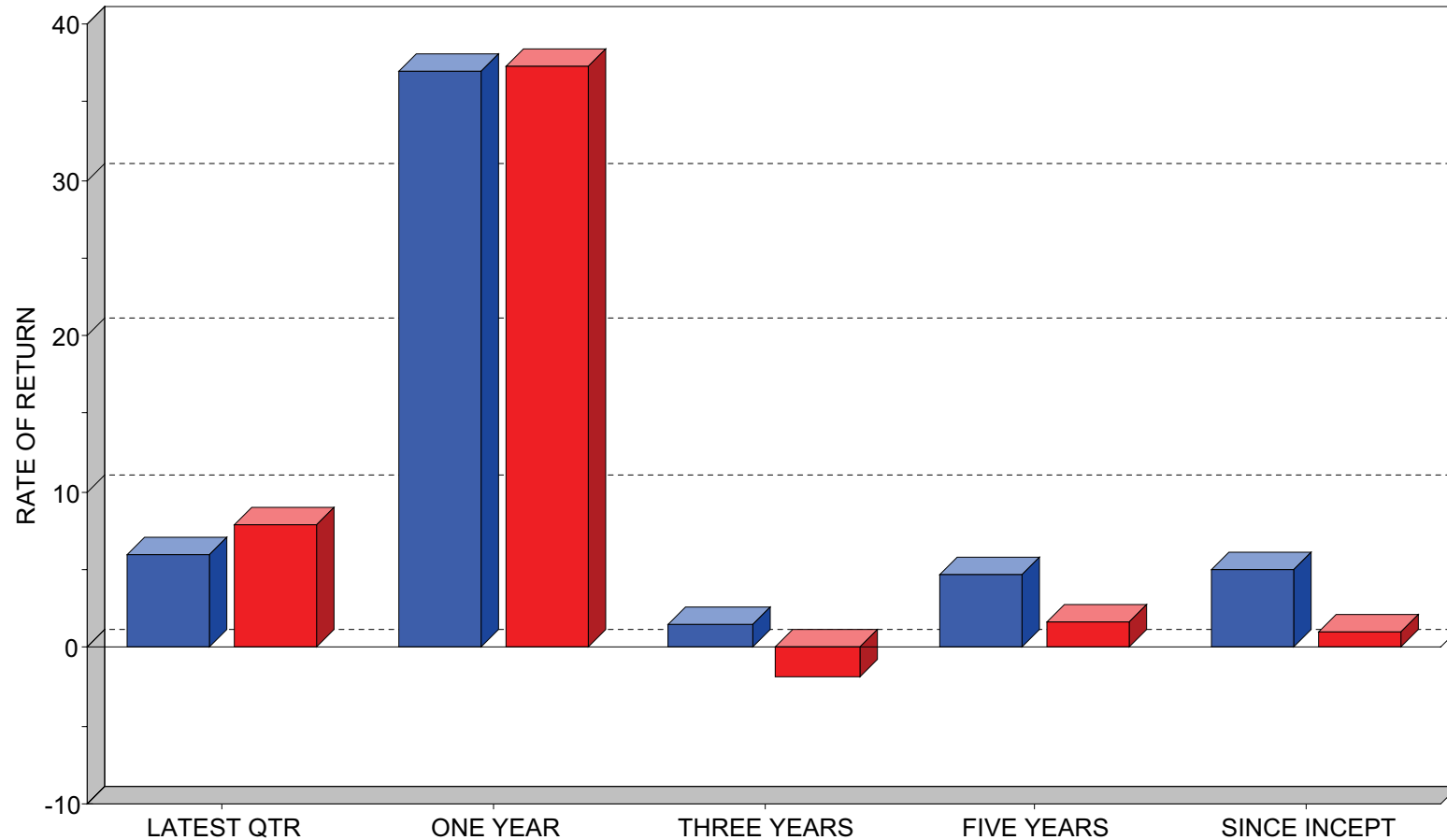
	LATEST QTR	ONE YEAR	THREE YEARS	FIVE YEARS	SINCE INCEPT
BEACON STREET INST'L LCGROWTH	1,060	1,370	1,047	1,262	1,476
RUSSELL 1000 GROWTH	1,079	1,372	944	1,084	1,079

* PSN is an investment manager database and is a division of Informa Investment Solutions, Inc. Reproduction of any information obtained from PSN in any form is prohibited except with the written permission of Informa Investment Solutions, Inc. Past performance does not guarantee future results. All rates of return are annualized. Performance figures shown are gross of fees and do not take into account advisory fees or transaction costs. These fees costs will reduce actual returns. The information provided is not intended to be a complete analysis of every material fact concerning separate account products. The performance figures have been reported solely for informational purposes and have been provided by the separate account managers. No representation is given with respect to their accuracy or completeness, nor that the figures are necessarily AIMR compliant, and they will be subject to change. This information should not be deemed an offer to sell or a solicitation of an offer to buy shares of any products that are described herein. Index performance returns do not reflect any management fees, transaction costs or expenses. One cannot invest directly in an index. Because of the possibility of human or mechanical error by IIS sources or others, IIS does not guarantee the accuracy, adequacy, completeness or availability of any information and is not responsible for any errors or omissions or for the results obtained from the use of such information. THERE ARE NO EXPRESS OR IMPLIED WARRANTIES, INCLUDING, BUT NOT LIMITED TO, WARRANTIES OF MERCHANTABILITY OR FITNESS FOR A PARTICULAR PURPOSE OR USE. In no event shall IIS be liable for any indirect, special or consequential damages in connection with use of any subset of PSN data or derived data.

Since Inception: DECEMBER 31, 2001



BEACON STREET CAPITAL, LLC INSTITUTIONAL LARGE CAP GROWTH PERFORMANCE ANALYSIS PERIODS ENDING DECEMBER 31, 2009



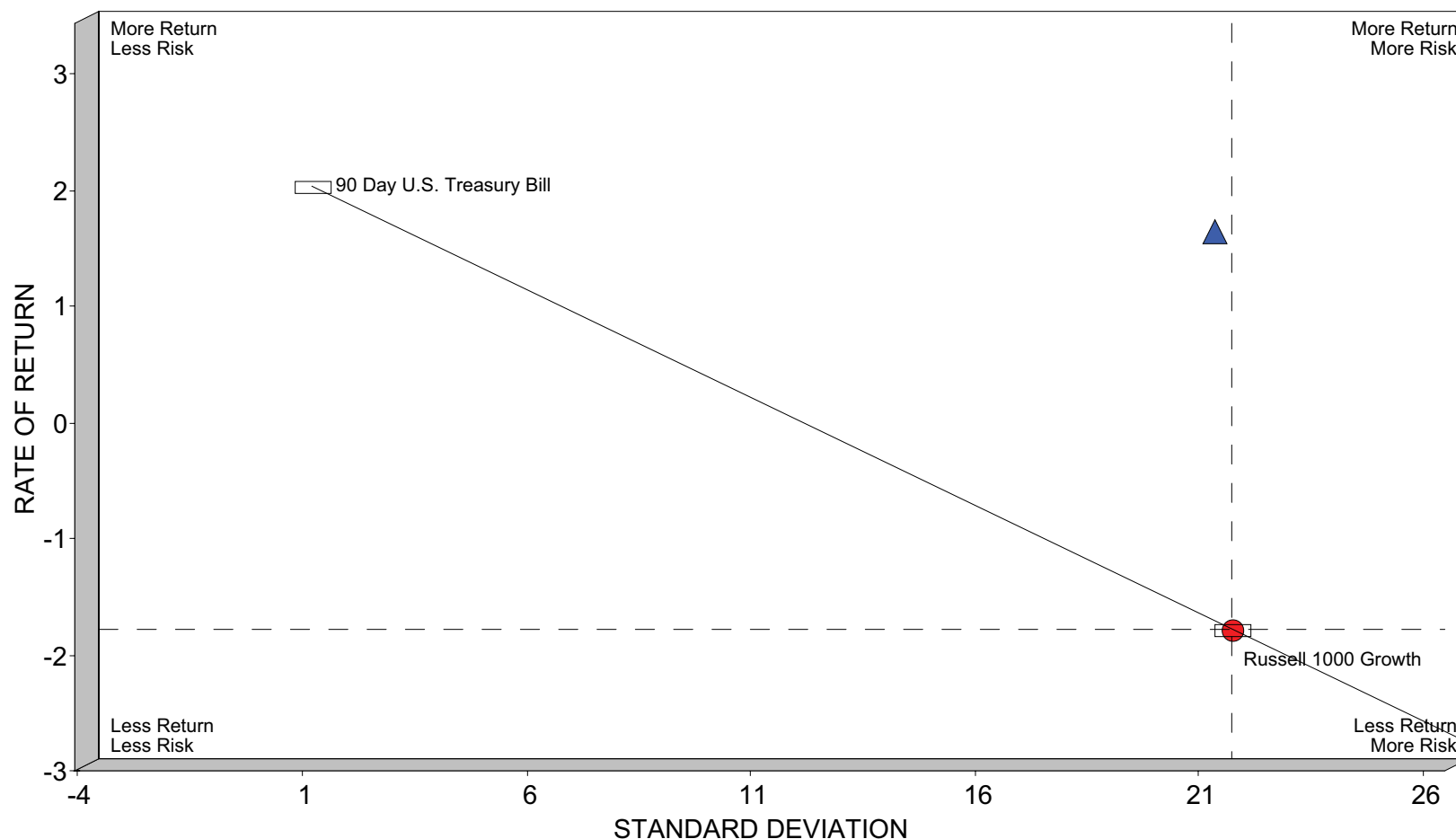
	LATEST QTR	ONE YEAR	THREE YEARS	FIVE YEARS	SINCE INCEPT
BEACON STREET INST'L LCGROWTH	6.03	37.03	1.53	4.77	4.99
RUSSELL 1000 GROWTH	7.94	37.21	-1.89	1.63	0.95

* PSN is an investment manager database and is a division of Informa Investment Solutions, Inc. Reproduction of any information obtained from PSN in any form is prohibited except with the written permission of Informa Investment Solutions, Inc. Past performance does not guarantee future results. All rates of return are annualized. Performance figures shown are gross of fees and do not take into account advisory fees or transaction costs. These fees costs will reduce actual returns. The information provided is not intended to be a complete analysis of every material fact concerning separate account products. The performance figures have been reported solely for informational purposes and have been provided by the separate account managers. No representation is given with respect to their accuracy or completeness, nor that the figures are necessarily AIMR compliant, and they will be subject to change. This information should not be deemed an offer to sell or a solicitation of an offer to buy shares of any products that are described herein. Index performance returns do not reflect any management fees, transaction costs or expenses. One cannot invest directly in an index. Because of the possibility of human or mechanical error by IIS sources or others, IIS does not guarantee the accuracy, adequacy, completeness or availability of any information and is not responsible for any errors or omissions or for the results obtained from the use of such information. THERE ARE NO EXPRESS OR IMPLIED WARRANTIES, INCLUDING, BUT NOT LIMITED TO, WARRANTIES OF MERCHANTABILITY OR FITNESS FOR A PARTICULAR PURPOSE OR USE. In no event shall IIS be liable for any indirect, special or consequential damages in connection with use of any subset of PSN data or derived data.

Since Inception: DECEMBER 31, 2001



**BEACON STREET CAPITAL, LLC
 INSTITUTIONAL LARGE CAP GROWTH
 RISK REWARD ANALYSIS
 3 YEAR PERIOD ENDING DECEMBER 31, 2009**



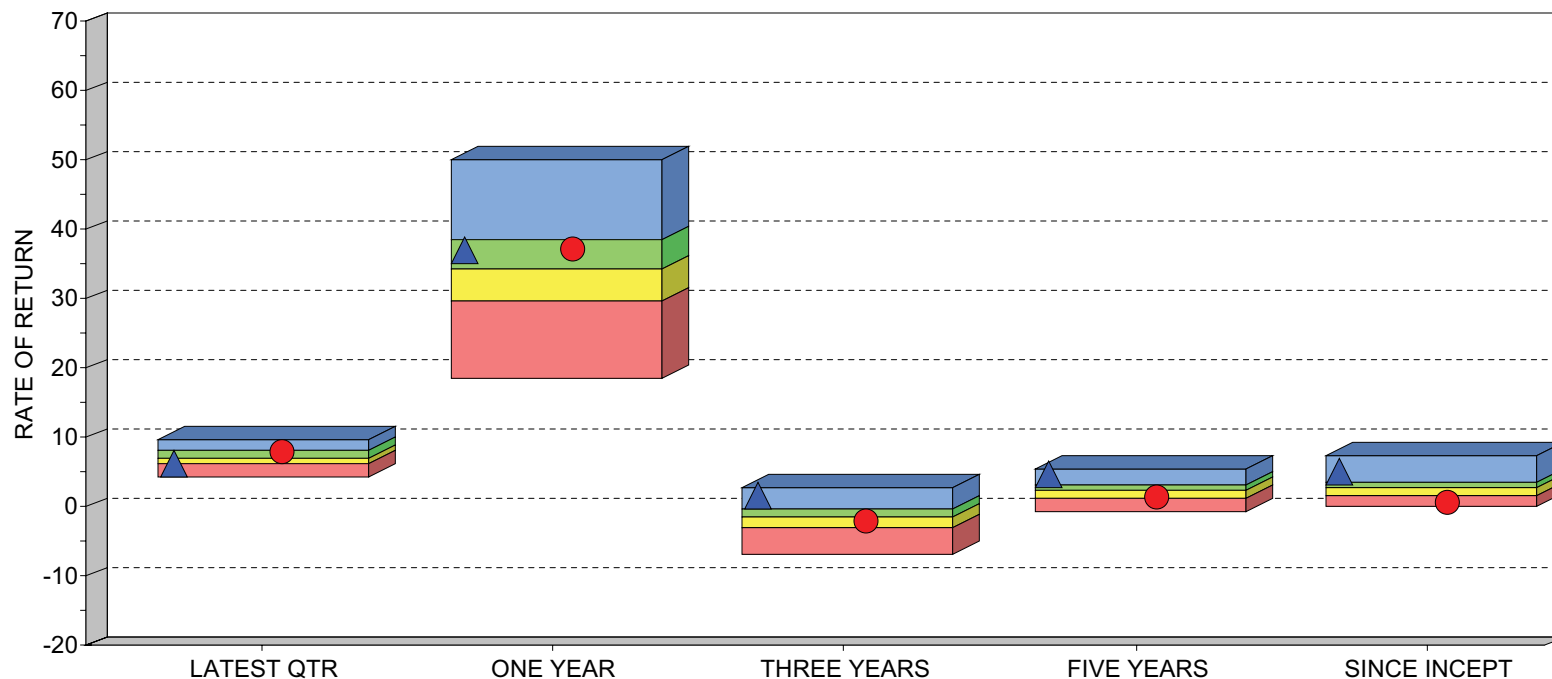
	ROR	STD DEV POP	ALPHA	BETA	R-SQUARED
▲ BEACON STREET INST'L LCGROWTH	1.53	21.09	3.22	0.97	0.97
● RUSSELL 1000 GROWTH	-1.89	21.48	0.00	1.00	1.00

* PSN is an investment manager database and is a division of Informa Investment Solutions, Inc. Reproduction of any information obtained from PSN in any form is prohibited except with the written permission of Informa Investment Solutions, Inc. Past performance does not guarantee future results. All rates of return are annualized. Performance figures shown are gross of fees and do not take into account advisory fees or transaction costs. These fees costs will reduce actual returns. The information provided is not intended to be a complete analysis of every material fact concerning separate account products. The performance figures have been reported solely for informational purposes and have been provided by the separate account managers. No representation is given with respect to their accuracy or completeness, nor that the figures are necessarily AIMR compliant, and they will be subject to change. This information should not be deemed an offer to sell or a solicitation of an offer to buy shares of any products that are described herein. Index performance returns do not reflect any management fees, transaction costs or expenses. One cannot invest directly in an index. Because of the possibility of human or mechanical error by IIS sources or others, IIS does not guarantee the accuracy, adequacy, completeness or availability of any information and is not responsible for any errors or omissions or for the results obtained from the use of such information. THERE ARE NO EXPRESS OR IMPLIED WARRANTIES, INCLUDING, BUT NOT LIMITED TO, WARRANTIES OF MERCHANTABILITY OR FITNESS FOR A PARTICULAR PURPOSE OR USE. In no event shall IIS be liable for any indirect, special or consequential damages in connection with use of any subset of PSN data or derived data.

RISK BENCHMARK USED FOR THIS ANALYSIS: RUSSELL 1000 GROWTH



BEACON STREET CAPITAL, LLC INSTITUTIONAL LARGE CAP GROWTH QUARTILE RANKING USING PSN LARGE CAP GROWTH PERIODS ENDING DECEMBER 31, 2009



	LATEST QTR	ONE YEAR	THREE YEARS	FIVE YEARS	SINCE INCEPT
▲ HIGH (0.05)	9.79	50.11	2.81	5.32	7.13
■ FIRST QUARTILE	7.95	38.28	-0.37	3.23	3.61
■ MEDIAN	7.07	34.32	-1.62	2.16	2.61
■ THIRD QUARTILE	6.14	29.53	-3.14	1.17	1.44
● LOW (0.95)	4.25	18.55	-6.86	-0.92	-0.01
MEAN	7.01	33.89	-1.70	2.20	2.64
VALID COUNT	278	278	268	244	209

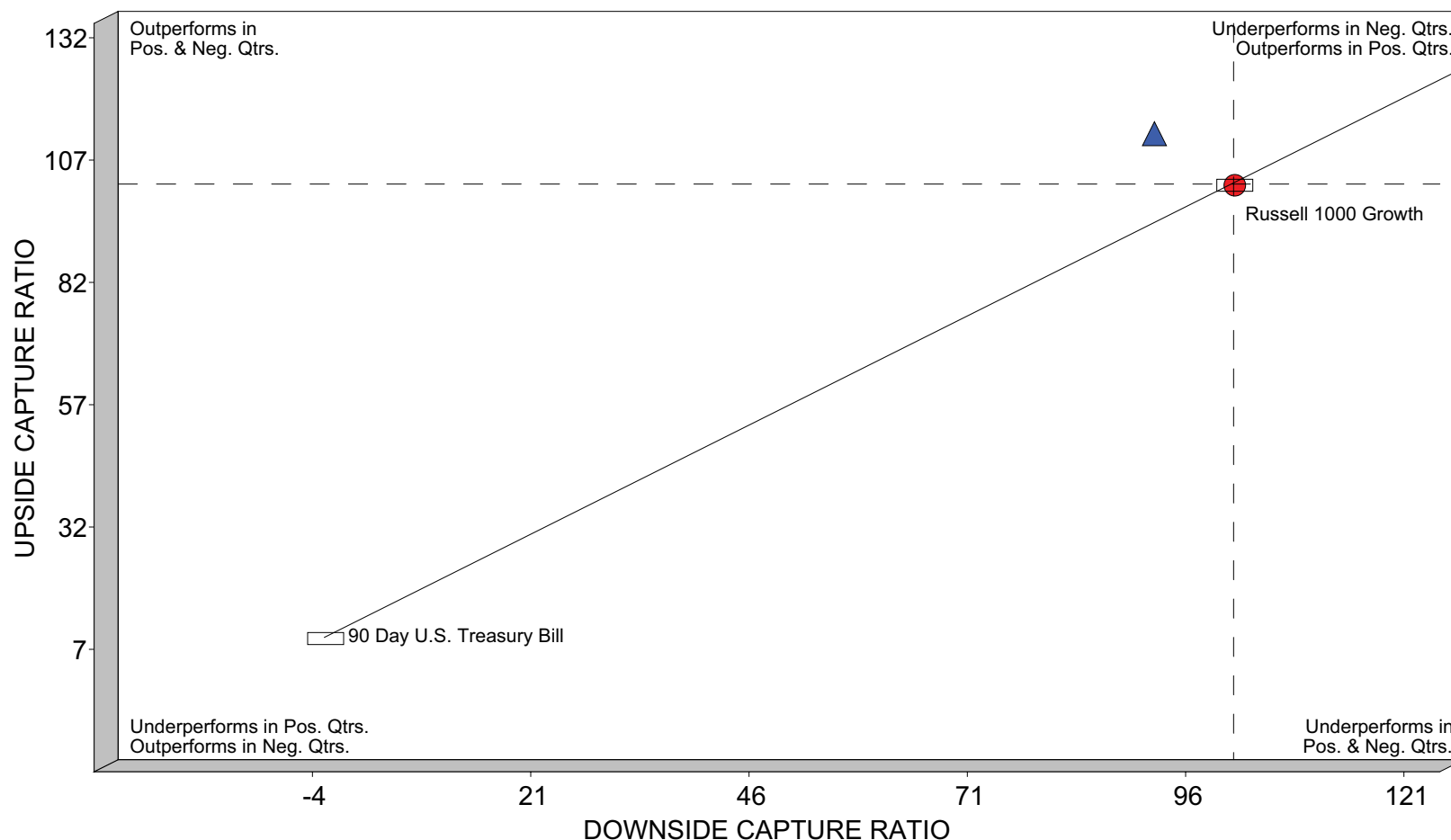
	LATEST QTR		ONE YEAR		THREE YEARS		FIVE YEARS		SINCE INCEPT	
	VALUE	RANK	VALUE	RANK	VALUE	RANK	VALUE	RANK	VALUE	RANK
▲ BEACON STREET INST'L LCGROWTH	6.03	77	37.03	32	1.53	7	4.77	4	4.99	8
● RUSSELL 1000 GROWTH	7.94	25	37.21	31	-1.89	55	1.63	63	0.95	85

* PSN is an investment manager database and is a division of Informa Investment Solutions, Inc. Reproduction of any information obtained from PSN in any form is prohibited except with the written permission of Informa Investment Solutions, Inc. Past performance does not guarantee future results. All rates of return are annualized. Performance figures shown are gross of fees and do not take into account advisory fees or transaction costs. These fees costs will reduce actual returns. The information provided is not intended to be a complete analysis of every material fact concerning separate account products. The performance figures have been reported solely for informational purposes and have been provided by the separate account managers. No representation is given with respect to their accuracy or completeness, nor that the figures are necessarily AIMR compliant, and they will be subject to change. This information should not be deemed an offer to sell or a solicitation of an offer to buy shares of any products that are described herein. Index performance returns do not reflect any management fees, transaction costs or expenses. One cannot invest directly in an index. Because of the possibility of human or mechanical error by IIS sources or others, IIS does not guarantee the accuracy, adequacy, completeness or availability of any information and is not responsible for any errors or omissions or for the results obtained from the use of such information. THERE ARE NO EXPRESS OR IMPLIED WARRANTIES, INCLUDING, BUT NOT LIMITED TO, WARRANTIES OF MERCHANTABILITY OR FITNESS FOR A PARTICULAR PURPOSE OR USE. In no event shall IIS be liable for any indirect, special or consequential damages in connection with use of any subset of PSN data or derived data.

Since Inception: DECEMBER 31, 2001



**BEACON STREET CAPITAL, LLC
INSTITUTIONAL LARGE CAP GROWTH
UPSIDE VS. DOWNSIDE MARKET CAPTURE ANALYSIS
3 YEAR PERIOD ENDING DECEMBER 31, 2009**



	UP MKT CAPT RETRN	UP CAP RATIO	DNSIDE CAP RETURN	DNSIDE CAP RATIO	R-SQUARED
▲ BEACON STREET INST'L LCGROWTH	35.57	110.05	-32.27	91.02	0.97
● RUSSELL 1000 GROWTH	32.32	100.00	-35.46	100.00	1.00

* PSN is an investment manager database and is a division of Informa Investment Solutions, Inc. Reproduction of any information obtained from PSN in any form is prohibited except with the written permission of Informa Investment Solutions, Inc. Past performance does not guarantee future results. All rates of return are annualized. Performance figures shown are gross of fees and do not take into account advisory fees or transaction costs. These fees costs will reduce actual returns. The information provided is not intended to be a complete analysis of every material fact concerning separate account products. The performance figures have been reported solely for informational purposes and have been provided by the separate account managers. No representation is given with respect to their accuracy or completeness, nor that the figures are necessarily AIMR compliant, and they will be subject to change. This information should not be deemed an offer to sell or a solicitation of an offer to buy shares of any products that are described herein. Index performance returns do not reflect any management fees, transaction costs or expenses. One cannot invest directly in an index. Because of the possibility of human or mechanical error by IIS sources or others, IIS does not guarantee the accuracy, adequacy, completeness or availability of any information and is not responsible for any errors or omissions or for the results obtained from the use of such information. THERE ARE NO EXPRESS OR IMPLIED WARRANTIES, INCLUDING, BUT NOT LIMITED TO, WARRANTIES OF MERCHANTABILITY OR FITNESS FOR A PARTICULAR PURPOSE OR USE. In no event shall IIS be liable for any indirect, special or consequential damages in connection with use of any subset of PSN data or derived data.

RISK BENCHMARK USED FOR THIS ANALYSIS: RUSSELL 1000 GROWTH